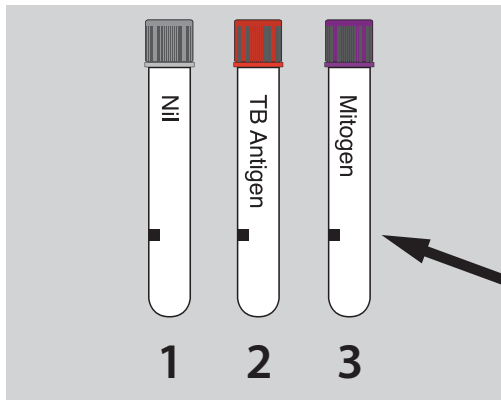




QuantIFERON® COLLECTION INSTRUCTIONS

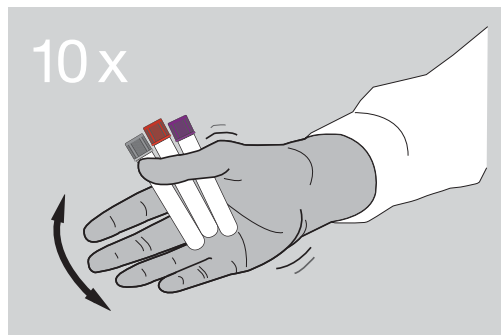
- QuantIFERON TB Collection Kit - *Supply #24522*
- To ensure adequate vacuum in elevations >3350 feet in altitude order: High Altitude QuantIFERON TB Collection Kit - *Supply #24579*

1



Collect 0.8 - 1.2 mL of blood into Nil (Grey-Top), Antigen (**Red-Top**), and Mitogen (**Purple-Top**) tubes.
Tubes must be collected in this order.

2



Shake tubes ten (10) times just firmly enough to ensure the entire inner surface of each tube is coated with blood.
Tubes must be shaken up and down.
Do not shake any other way.
DO NOT CENTRIFUGE.

3

**QUANTIFERON
TB GOLD
PROCESS IMMEDIATELY**

Apply the neon green QUANTIFERON label provided with your collection kit to the outside of the specimen transport bag.

Transport samples directly to Sonora Quest Laboratories at room temperature for incubation and specimen processing.

Samples must be received within 12 hours of collection and incubated within 16 hours of collection.

Statewide: Do not collect on Sundays

Rural Area Clients: Collect Monday - Friday after 11:00 AM only